

easyioFGLcd Implementation

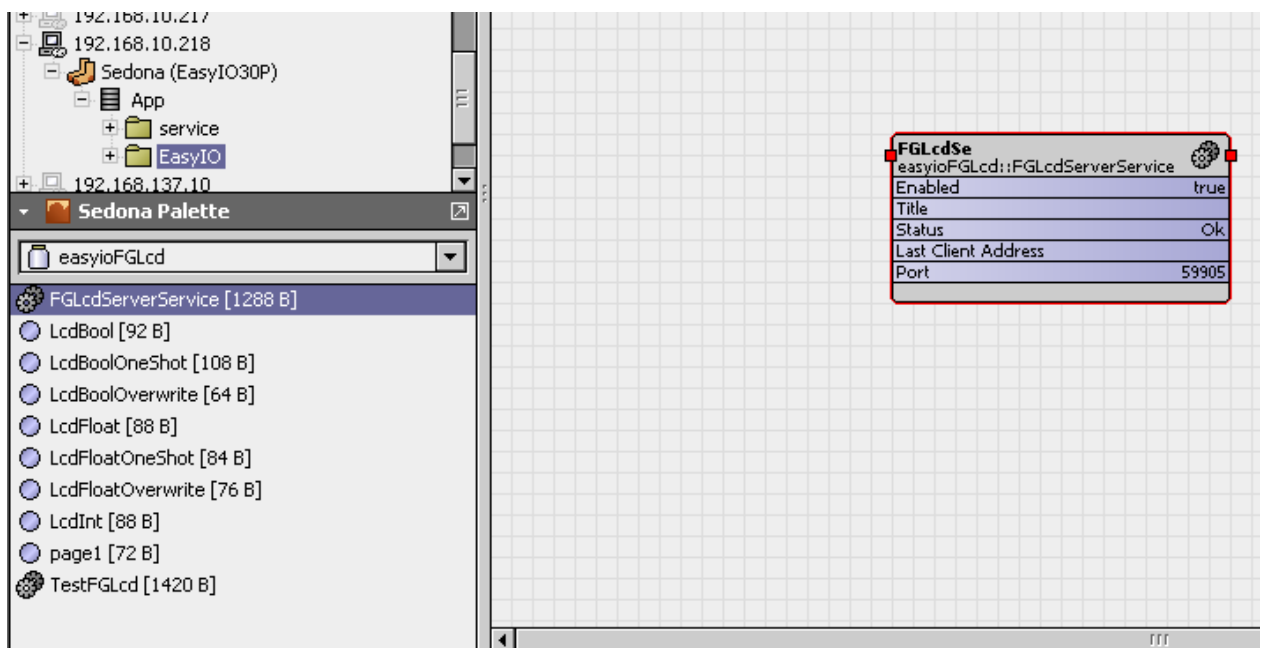
Server

Step 1:

Manage kits to install **easyioFGLcd** into your controller

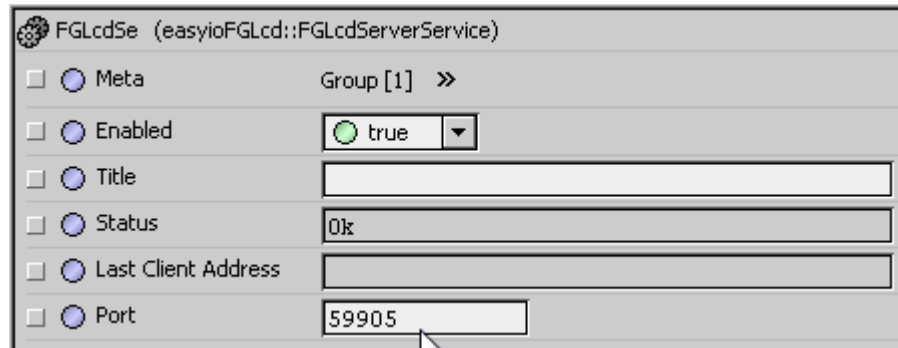
Step 2:

- Choose **easyioFGLcd** from Sedona Palette
- Drag & drop the **FGLcdServerService** into your **App** (in this case EasyIO)



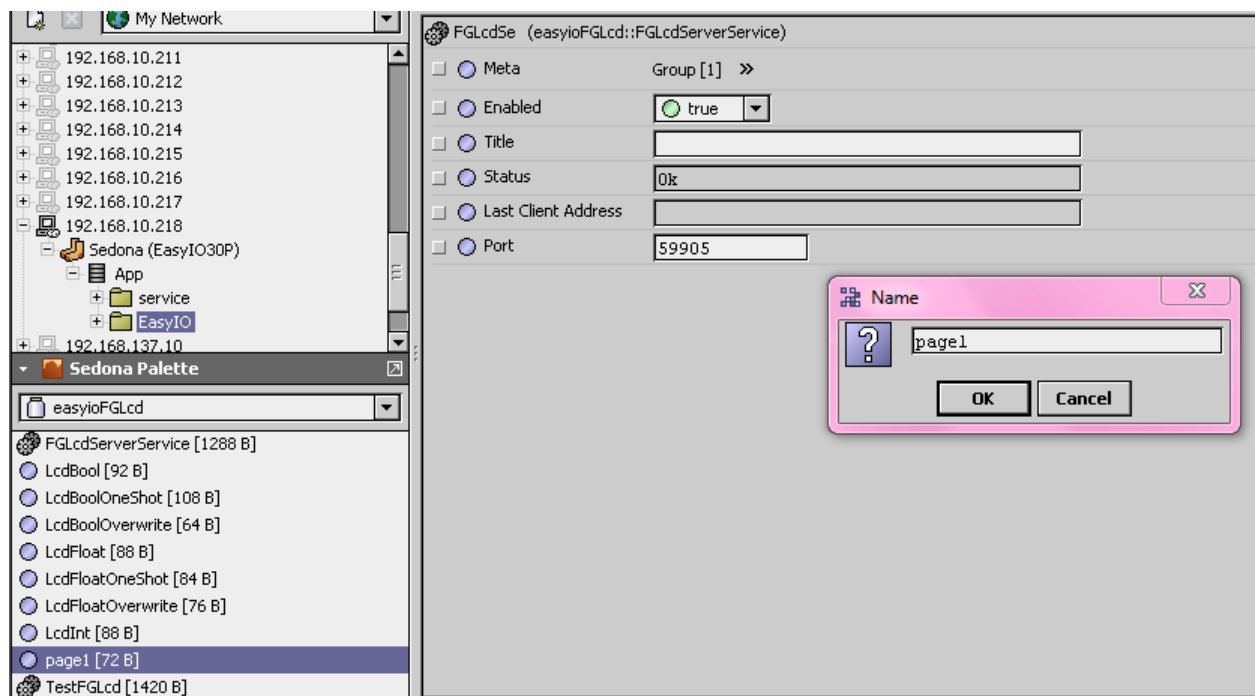
Step 3:

- Go into the property sheet
- Leave the port number as default (59905)



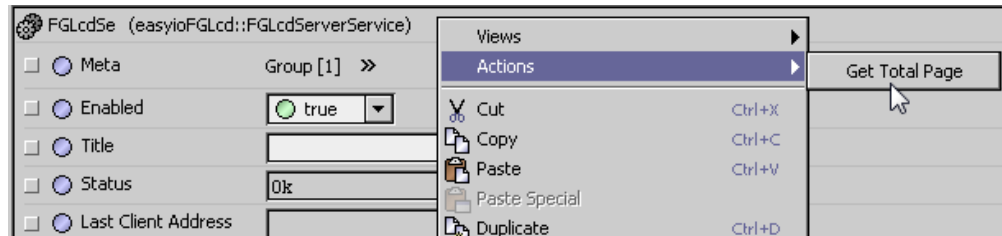
Step 4: Create "page" object

- Drag & drop the page under **FGLcdServerService**
- Name the page according to page sequence, e.g. "page1", "page2", etc... (up to maximum of 99 pages)



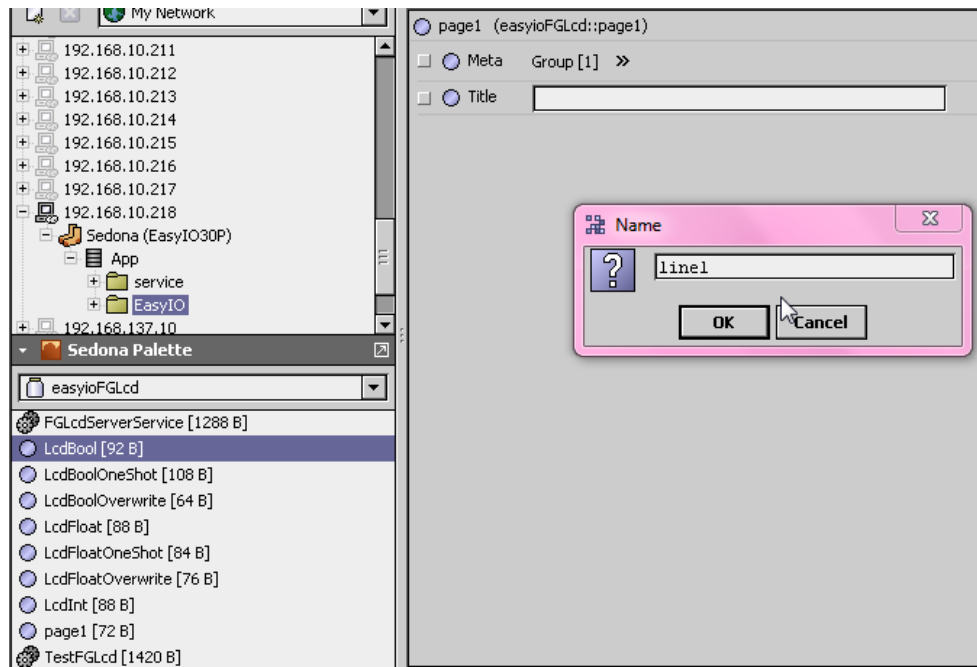
Step 5: **Get maximum page number**

- Right click on **FGLcdServerService** and invoke action “**Get Total Page**” after setup all the pages
(This step is a **MUST**, in order to pass the correct number of pages to LCD display)



Step 6: **Create “line” object**

- Drag & drop the page under **page** object
- Name the page according to line sequence, e.g. “line1”, “line2”, etc...
(up to maximum of 6 lines)

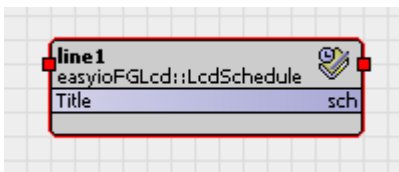


How to link Schedule and Calendar object in Sedona

Step 1:

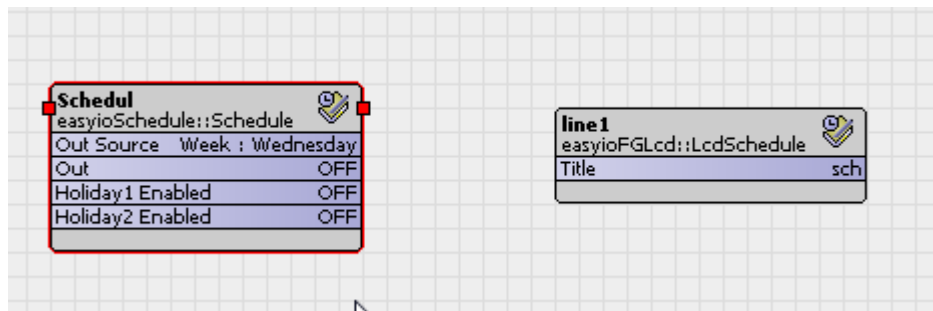
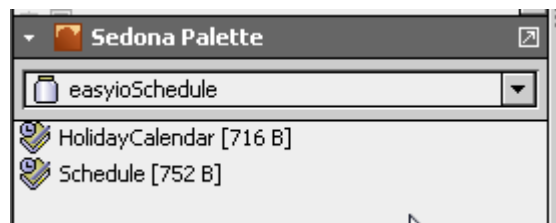
- Put in LcdSchedule from easyioFGLcd kit
- name it with "lineX", where X = 1, 2, 3, 4, 5 or 6

*** Both schedule and calendar object are also link using LcdSchedule, and LcdSchedule will detect which one is connected

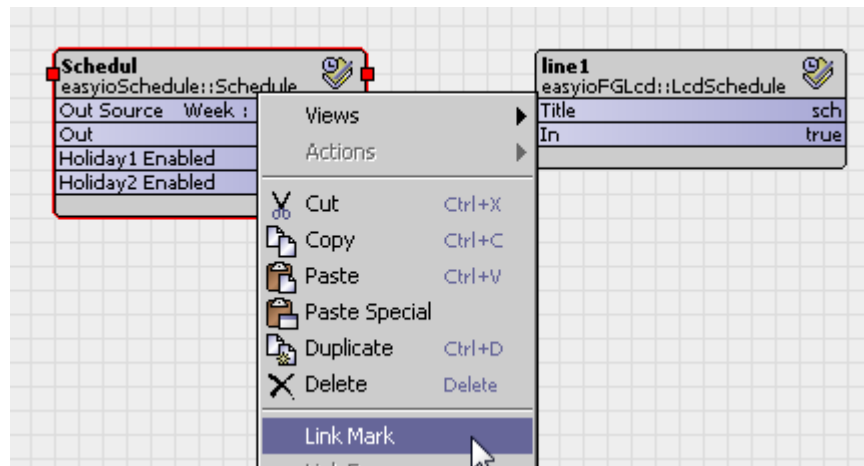


Schedule

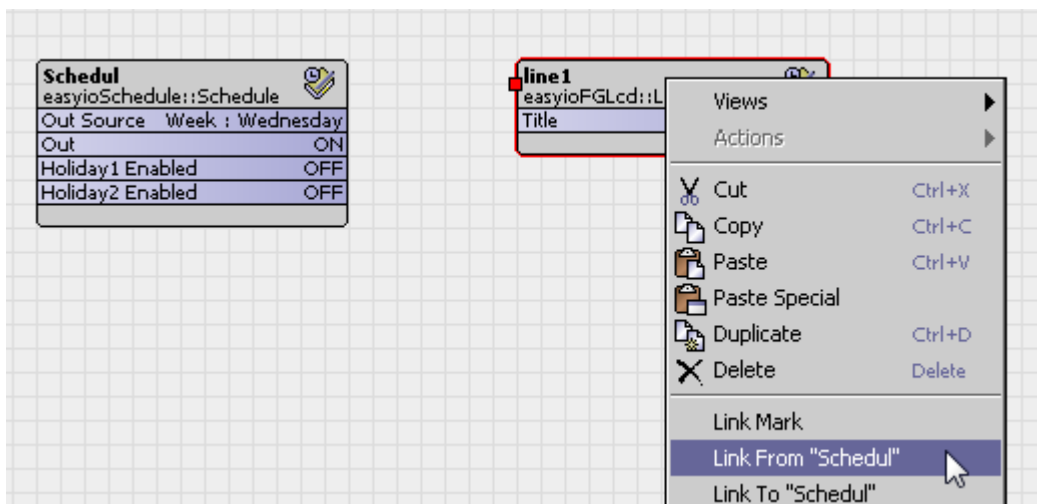
Step 2: Put in 'Schedule' object from easyioSchedule kit, and 'Link Mark' the schedule object



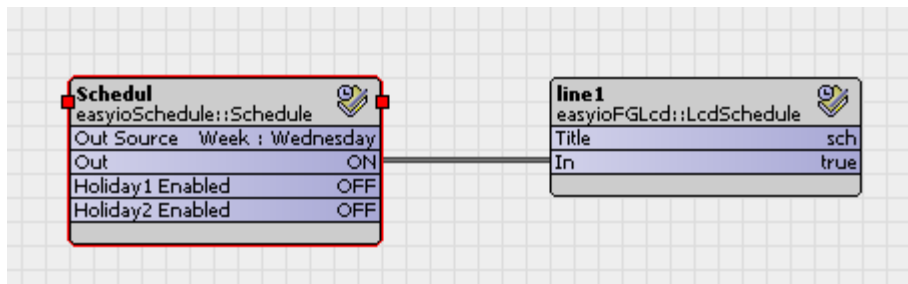
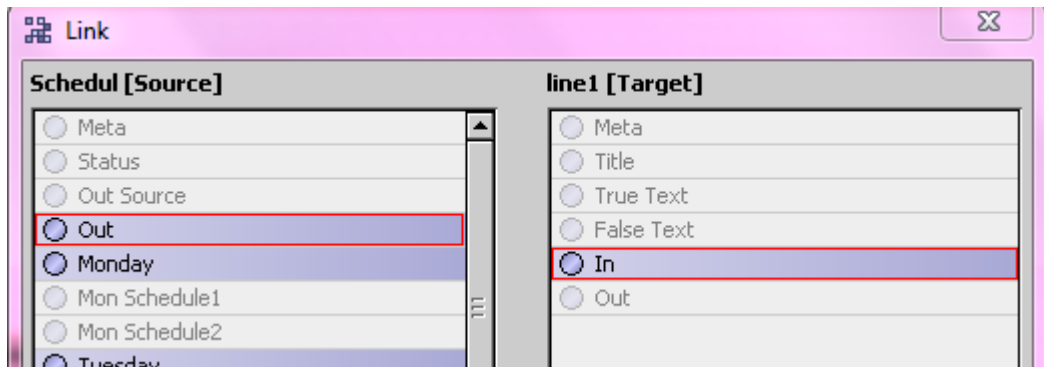
Step 3: 'Link Mark' the schedule object



Step 4: go to the LcdSchedule object, and select link From "Schedule"

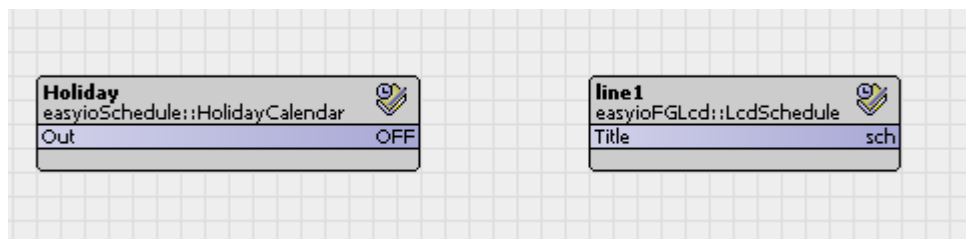
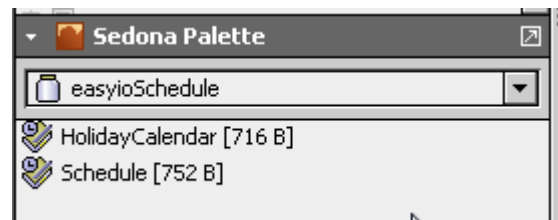


Step 5: Link the "Out"(Schedule object) to "In" (LcdSchedule object)

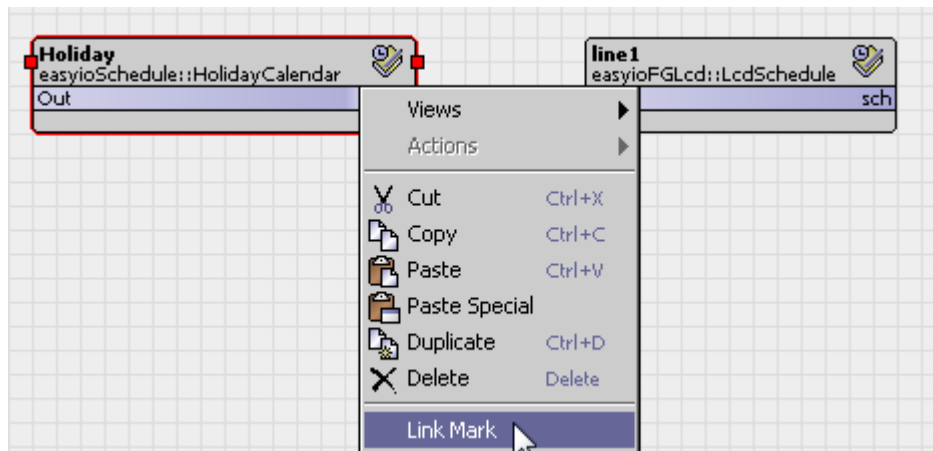


Calendar

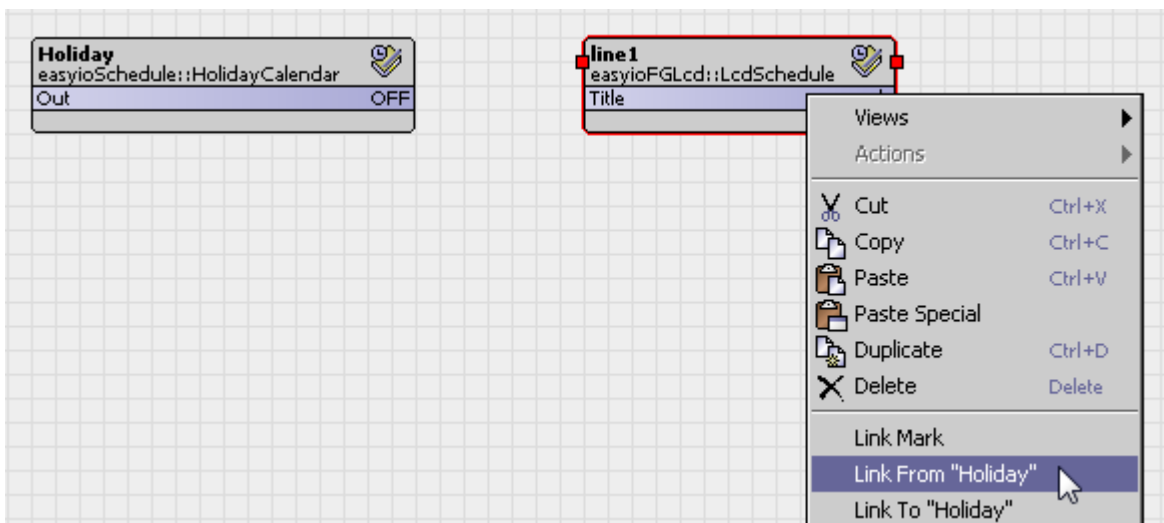
Step 2: Put in 'HolidayCalendar' object from easyioSchedule kit, and 'Link Mark' the schedule object



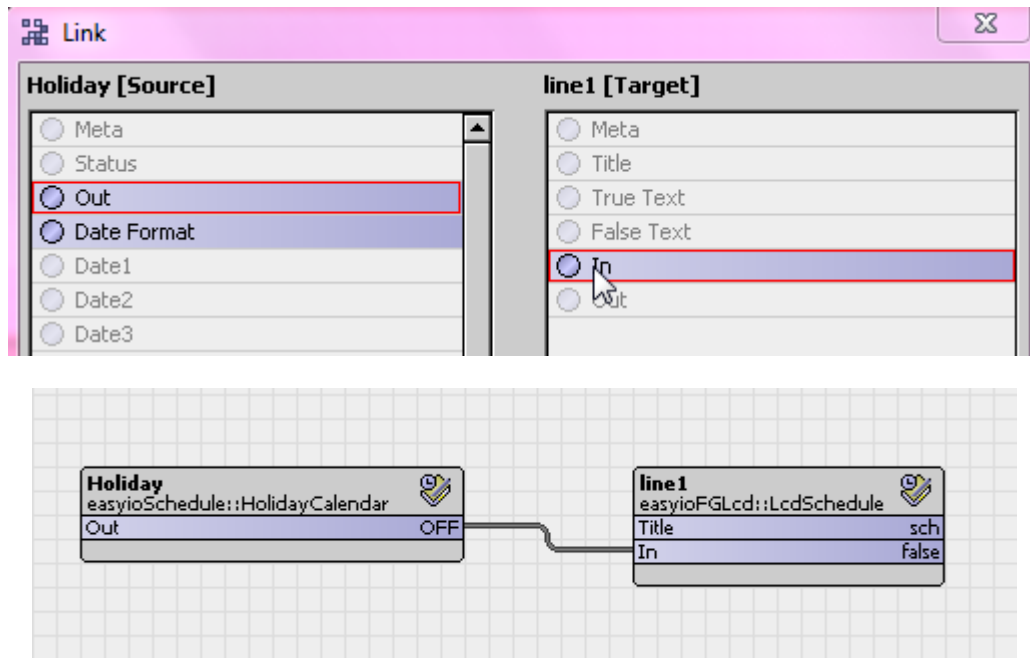
Step 3: 'Link Mark' the HolidayCalendar object



Step 4: go to the LcdSchedule object, and select link From "Holiday"



Step 5: Link the “Out”(HolidayCalendar object) to “In” (LcdSchedule object)

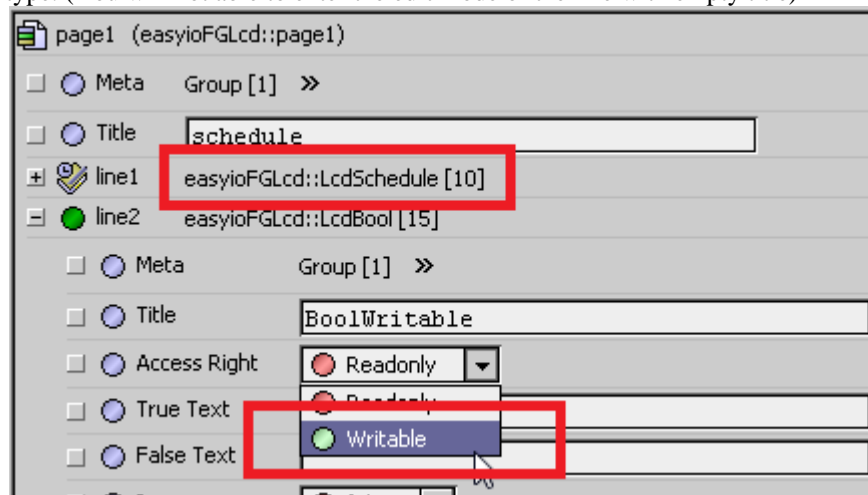


Caution

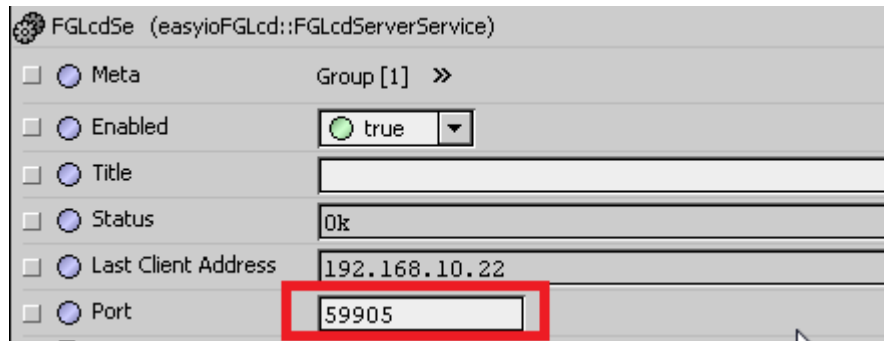
*** Make sure there is **DateTimeServiceStd** component in your apps, and it's in **datetimeStd** kit



*** Make sure the title of **line** is **NOT EMPTY** for any line with “**access right**” set to **Writable**, or any line with **LcdSchedule** type. (You will not able to enter the edit mode of the line with empty title)



*** Make sure the port number of the **FGLcdServerService** is set to **59905 (default)**, this is the only port number working with current LCD firmware.



The image shows a configuration window for 'FGLcd5e (easyioFGLcd::FGLcdServerService)'. It contains several settings:

- Meta Group [1] >>
- Enabled true
- Title
- Status Ok
- Last Client Address 192.168.10.22
- Port 59905

The 'Port' field is highlighted with a red rectangular box.