

Amazingly simple, Immediately useful

## Product Overview

The E-Mon D-Mon<sup>®</sup> driver, from CSI<sup>3</sup>, is the first available driver on the market for Niagara<sup>AX</sup> that allows users to integrate the E-Mon D-Mon<sup>®</sup> meters using E-Mon's EZ-7 native protocol.

Just like all of the CSI<sup>3</sup> drivers, the following features are always inherent:

- **Built on the Niagara<sup>AX</sup> Framework<sup>™</sup>**
- **Full support of all Open Protocols**
- **Ease of Use - Built-in Network Discovery of devices**
- **Device level serial and/or IP enabled ("-e" part-number meters) are supported**

*Features such as ease of use, through built-in discovery, and web enablement of legacy/proprietary systems makes this driver a perfect fit to bring your system into the 21<sup>st</sup> Century.*

The E-Mon D-Mon<sup>®</sup> driver, from CSI<sup>3</sup> allows the user to integrate directly E-Mon D-Mon<sup>®</sup> Class 3000, V-Class and Class 5000 meters and/or with E-Mon's Interval Data Recorders (IDRs) which provides access to Class 1000 and Class 2000 devices. This software will function on all Niagara<sup>AX</sup> 3.n.nnn platforms integrating via E-Mon's EZ-7 protocol. Make sure you select their native EZ-7 as your protocol choice, when selecting/purchasing these meters from E-Mon.

For Class 3000, V-Class and Class 5000 meters, all energy points can be discovered and added to a Niagara<sup>AX</sup> application. For IDR integration, only kW and kWh points can be discovered and added.

*Using this driver, you can easily integrate any Class 3000 E-Mon D-Mon<sup>®</sup> meter and IDR that has Class 1000 and/or Class 2000 meters, into Niagara<sup>AX</sup>*

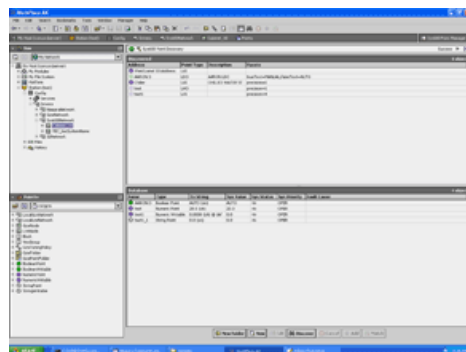
Class 1000/2000



Class 3000



Interval Data Recorder



Workbench view of Niagara<sup>AX</sup> - automatic Network Discovery of objects using the CSI<sup>3</sup> E-Mon D-Mon<sup>®</sup> driver.